

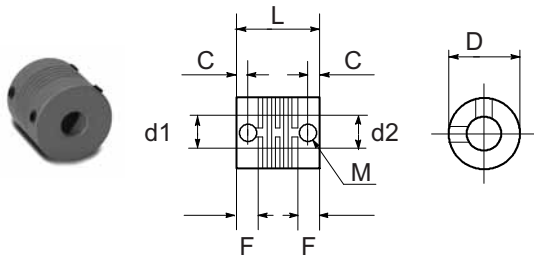
Encoder Couplings

Couplings provide a connection between encoders and solid shafts. We offer fiberglass and aluminum metric-to-metric couplings and aluminum metric-to-S.A.E. couplings. Use the selection guide below to help select your coupling.

Couplings Selection Guide and Dimensions														
Type	Part No.	Price	Applicable Encoders	Material	d1	d2	D	L	F	C	M	a	E	S
					mm*									
Fiberglass (metric)	GJ-6D	<--->	TRD-S	Glass-fiber reinforced polyacetal	6	6	15	21.6	5.2	2.8	M3 set screw	6° max.	0.5mm max.	0.12mm max.
	GJ-8D	<--->	TRD-N,-NA		8	8	19	24	6.8	3.5	M4 set screw	5° max.	0.5mm max.	0.12mm max.
	GJ-10D	<--->	TRD-GK		10	10	22	26.2	7.1	3.6	M4 set screw	5° max.	0.5mm max.	0.12mm max.
Aluminum (metric)	RU-075D	<--->	TRD-S	Aluminum alloy	6	6	19.1	19.1	4.8	9.5	M3 set screw	5° max.	0.25mm max.	0.12mm max.
	JU-100D	<--->	TRD-N,-NA		8	8	25.4	25.4	6.9	3.8	M5 set screw	5° max.	0.25mm max.	0.12mm max.
	RU-100D	<--->	TRD-GK		10	10	25.4	25.4	6.9	3.8	M5 set screw	5° max.	0.25mm max.	0.12mm max.
Aluminum (metric to SAE)	MCGL16-6-635	<--->	TRD-S	Aluminum alloy (Bent plate: Polyimide)	6	6.35 (0.25")	16	23.2	7	3	M3 set screw	3.5° max.	0.3mm max.	0.3mm max.
	MCGL20-8-635	<--->	TRD-N,-NA		8	6.35 (0.25")	20	26	7.5	3.7	M3 set screw	3.5° max.	0.3mm max.	0.4mm max.
	MCGL20-8-952	<--->	TRD-N,-NA		8	9.52 (0.375")	20	26	7.5	3.7	M3 set screw	3.5° max.	0.3mm max.	0.4mm max.
	MCGL25-10-635	<--->	TRD-GK		10	6.35 (0.25")	25	30.2	9	4	M4 set screw	3.5° max.	0.3mm max.	0.5mm max.
	MCGL25-10-952	<--->	TRD-GK		10	9.52 (0.375")	25	30.2	9	4	M4 set screw	3.5° max.	0.3mm max.	0.5mm max.

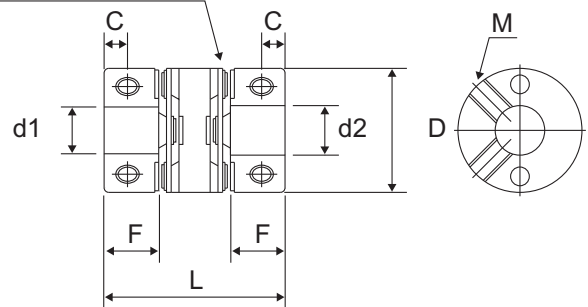
* mm ÷ 25.4 = inches

GJ-6D, GJ-8D, and GJ-10D fiberglass couplings

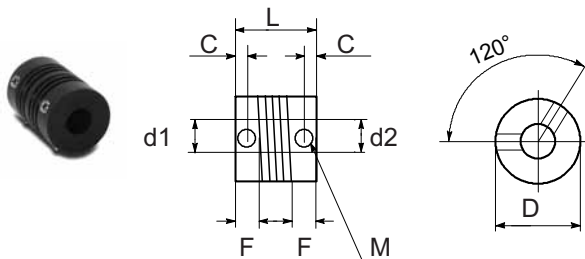


MCGLxx aluminum couplings

Bent plate: polyimide



RS-075D, RS-100D, and JU-100D aluminum couplings



Misalignment compensation

